

# CLUSTER SWIVEL BOOTH



COMFORT



DESIGN

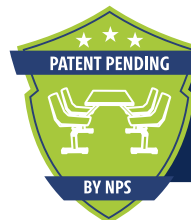


PERFORMANCE



FEATURING

**Lūvra**  
FLEX



CLUSTER SWIVEL BOOTH  
**PATENT PENDING**  
INNOVATIVE ENGINEERING AND DESIGN



**7 DAY QUICK SHIP**

**CSBG2448-MDPEGYxx**  
(24"x48" Rectangular, MDF Core, Black ProtectEdge, Grey Nebula Top)

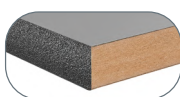
## Tabletops Tabletop Dimensions are 24" x 48"



**1.2" particleboard core HPL Surface T-molding (PBTM)**



**1.2" Particleboard HPL Surface PVC Edge Banding (PB EB)**



**1.2" MDF core HPL Surface Protect Edge (MDPE)**

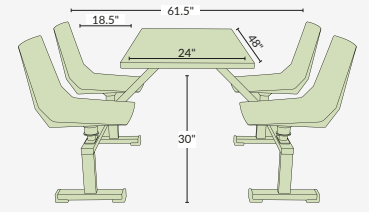


**1.2" Particleboard Core Whiteboard HPL Surface PVC Edge Banding (WB)**



**1.75" Solid Maple Wood Butcherblock Proprietary UV Finish (BB)**

*See back for warranty, finish options and care instructions.*



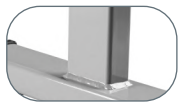
## Features



**Flex Back Tested by SGS Labs to Resist 425 Lbs of Force**



**Unique Design for Ultimate Seating Comfort**



**13-Gauge Heavy-Duty Steel Frame**



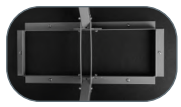
**18-1/2" Space from Tabletop to Seat Back**



**Seats Are Mounted on An Industrial Grade Swivel Base**



**T-Shaped Legs for Extreme Stability**

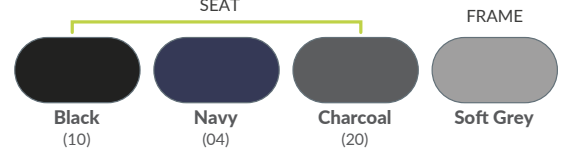


**Undertable 11-Gauge Framing System**



**Tamper Free Hardware**

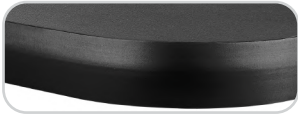
## Colors



## Model Number Configuration



## Standard Edges No minimum required



Vinyl T-Molding | Black (TM)



Protect Edge | Black (PE)



3MM PVC Edge Banding | Black (EB)

## Premium Edges Subject to minimum quantity and upcharge

VINYL T-MOLD



Navy (TN)



Green (TG)



Red (TR)



Brown (TO)



Beige (TB)



Silver (TS)



Medium Grey (TE)



Light Grey (TL)

PROTECT EDGE



Navy (PN)



Green (PG)



Red (PR)



Purple (PP)



Orange (PO)



Beige (PB)



Dark Grey (PD)



Medium Grey (PM)



Light Grey (PL)

3MM PVC  
EDGE BANDING



Navy (EN)



Green (EG)



Red (ER)



Purple (EP)



Beige (EE)



Dark Grey (ED)



Medium Grey (EM)



Light Grey (EL)

## Custom Logo Options

Upcharge and extended lead times apply.



## Standard Laminates

*No minimum required*

						
Robin RN	Port PO	Regimental Red RR	Hollyberry RE	Candy Apple CD	Dragon Fire DF	Orange Grove OG
						
Maroochy Brush MB	Marigold YW	Island IS	Hunter Green GR	Morrocan MA	Ocean OC	Persian Blue BL
						
Lapis Blue LB	Catalina CI	Indigo IN	Atlantis AT	Brittany Blue BB	Woolamai Brush WO	Navy Legacy NL
						
Cassis XS	Concord Grape CG	Black BK	Graphite Nebula GN	Asian Night AN	Rustic Slate RS	Forged Steel FS
						
Figured Mahogany MY	Coffee Bean CB	Montana Walnut WT	Windswept Bronze WZ	Pinnacle Walnut PN	Windsor Mahogany WM	Lowell Ash LA
						
Burnished Chestnut CT	Buka Bark KB	Earthen Warp EW	River Cherry RC	Nepal Teak NT	Wild Cherry CH	Fonthill Pear FP
						
Harvest Maple HM	New Age Oak NW	Monticello Maple MP	Bannister Oak OK	Castle Oak CO	Fusion Maple FM	Limber Maple LM
						
Kensington Maple KS	Manitoba Maple MT	Almond Leather AL	Natural Almond NA	Desert Zephyr DZ	Natural Tigris NG	Natural Nebula NN
						
Steel Mesh SL	Slate Grey SG	Mystic Night MN	Pewter Brush PB	Windswept Pewter WP	Twilight Zephyr TZ	Boardwalk Oak BD

## Standard Laminates

No minimum required



## Premium Laminates

Minimum Quantity, Upcharge and 10 Week Lead Time Apply



**IF YOU DON'T  
SEE A LAMINATE,  
JUST ASK!**

Choose any laminates from:

May be subject to minimum quantity and upcharge



## Butcherblock Finishing Options

### STANDARD



Urethane-Based Satin Finish

Code: BB

<b>CORE MATERIAL</b>	Solid Hard Maple Edge Grain Top
<b>FINISH</b>	Proprietary Urethane-Based Satin Finish
<b>EDGE</b>	Long Edge Beveled • Square Ends
<b>THICKNESS</b>	1.75"
<b>FOOD SAFE</b>	Yes

**MAINTENANCE** Recommended to re-finish every 2-3 weeks depending on usage.



Refinishing can be done fairly quickly using a rag and Emmet's Good Stuff Gel Urethane

### CUSTOM



Varnique Semi-Gloss Finish

*Upcharge and Extended Lead Time apply*

Code: BV

<b>CORE MATERIAL</b>	Solid Hard Maple Edge Grain Top
<b>FINISH</b>	Natural Penetrating Oil Finish
<b>EDGE</b>	Long Edge Beveled • Square Ends
<b>THICKNESS</b>	1.75"
<b>FOOD SAFE</b>	Yes

**MAINTENANCE** Recommended to re-finish every 3-4 weeks depending on usage.



Refinishing can be done fairly quickly using a rag and Boos® EZ-DO Finish

*Limited Warranty: Since Natural Wood Products rely heavily on the care they receive, Butcherblock Tabletops have One Year Warranty. The rest of the parts of the product still carry a Ten Year Warranty.*