

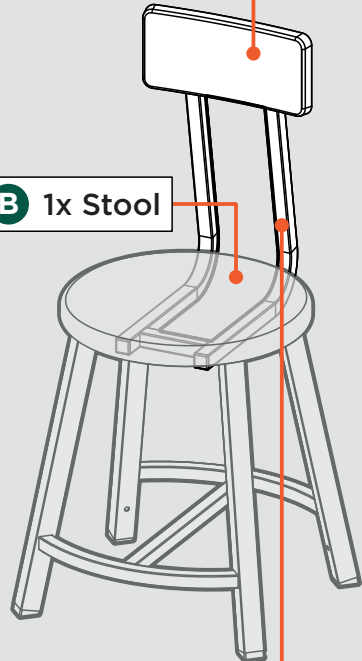


STOOL COMPONENTS

A 1x Backrest

B 1x Stool

C 1x Backrest Arm



TOOLS FOR ASSEMBLY



Allen Wrench

INCLUDED HARDWARE



2x M6x14 Bolt

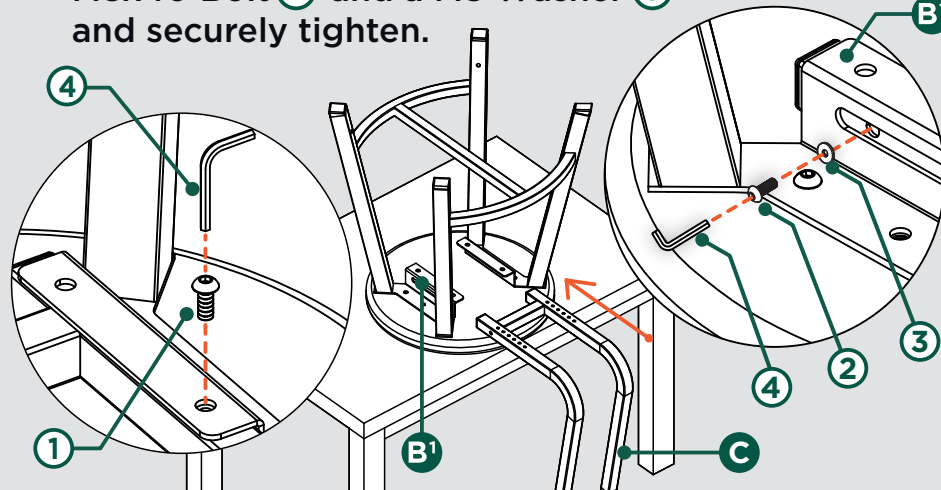


4x M8x40 Bolt



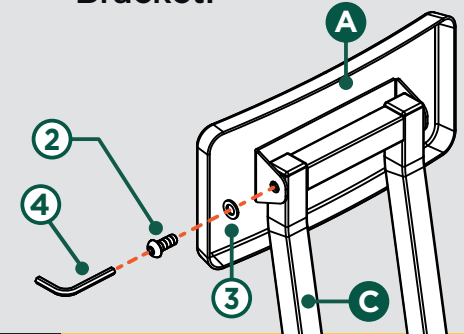
4x M8 Washer

1 Turn stool upside down on a flat surface and insert the Backrest Arm **C** through the Stool Frame Brackets **B¹**. The Backrest Arm has six adjustment levels, choose the desired one and drive an M6x14 Bolt **1** on each side and tighten securely using Allen Wrench **4**. Insert into each side of the Stool Frame Brackets a M8x40 Bolt **2** and a M8 Washer **3** and securely tighten.



! Ensure that all Bolts are fastened tightly.

2 Install the Backrest **A** into the Backrest Arm **C** drive the supplied M8x40 Bolt **2** and M8 Washer **3** thru the slot of the Backrest Bracket.

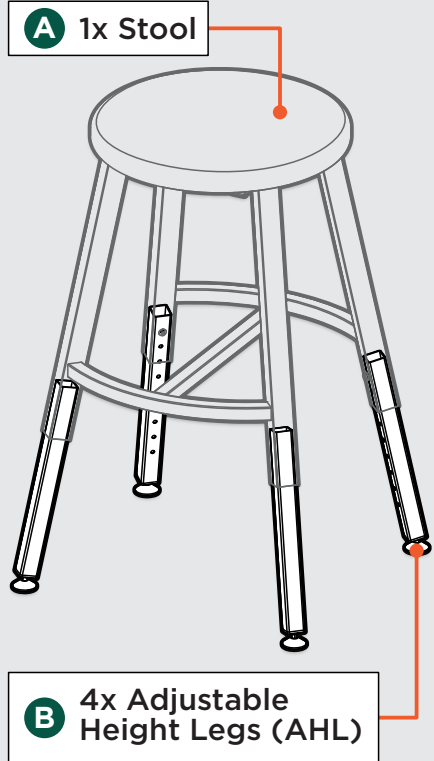


! Double check all Bolts to be tightened securely before use. Check all Bolts periodically. Failure to completely tighten the Bolts may result in tipping and possible injury!

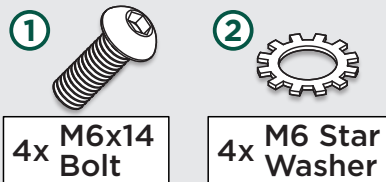
Congratulations, your **STOOL WITH BACKREST** is now assembled and ready to be used!



STOOL COMPONENTS



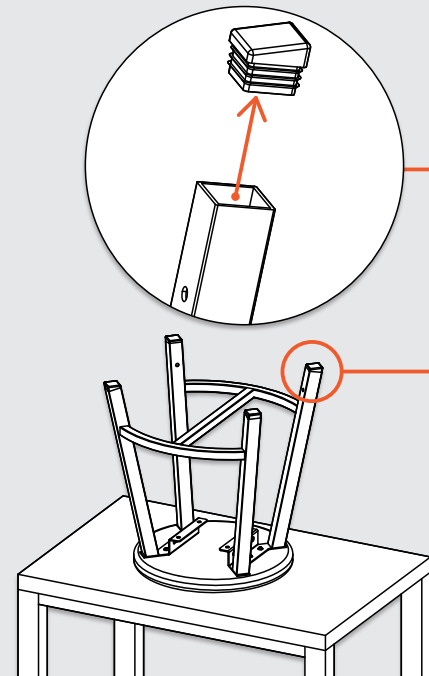
INCLUDED HARDWARE



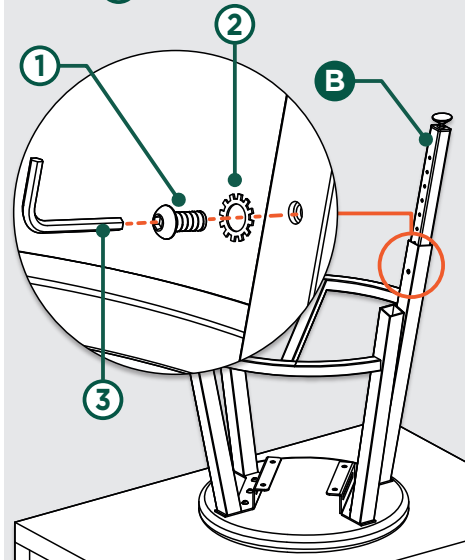
TOOLS FOR ASSEMBLY



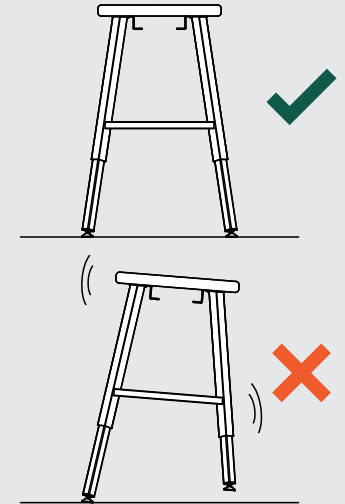
1 Turn stool upside down on a flat surface and remove all four glides.



2 Insert each AHL **B** into each stool leg hole. Align the hole on the Stool leg with the hole on the AHL to desired height. Drive the supplied M6x14 Bolt **1** and M6 Star Washer **2** through both holes and tighten securely using Allen Wrench **3**.



3 Be sure to align all legs at same height.



! Double check all bolts to be tightened securely before use. Check all screws periodically. Failure to completely tighten the screws may result in tipping and possible injury!

! Ensure that all bolts are fastened tightly.

Congratulations, your stool with adjustable height legs is now assembled and ready to be used!